

## Low Voltage 12, 24 and 48VDC Permanent Magnet DC Motors 1/4HP to 1HP

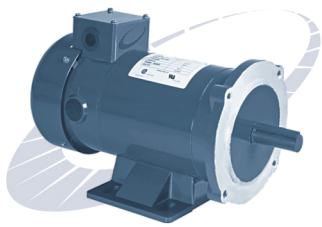
### Applications:

Low voltage DC motors for use from batteries and generator supplied power.

### Features:

- TEFC & TENV Enclosures.
- Permanently lubricated sealed ball bearings.
- Highest quality permanent magnets for high starting torque and increased reliability.
- Class H insulation.
- Easy brush access with simple brush holder design.
- CSA and CSAus certified.

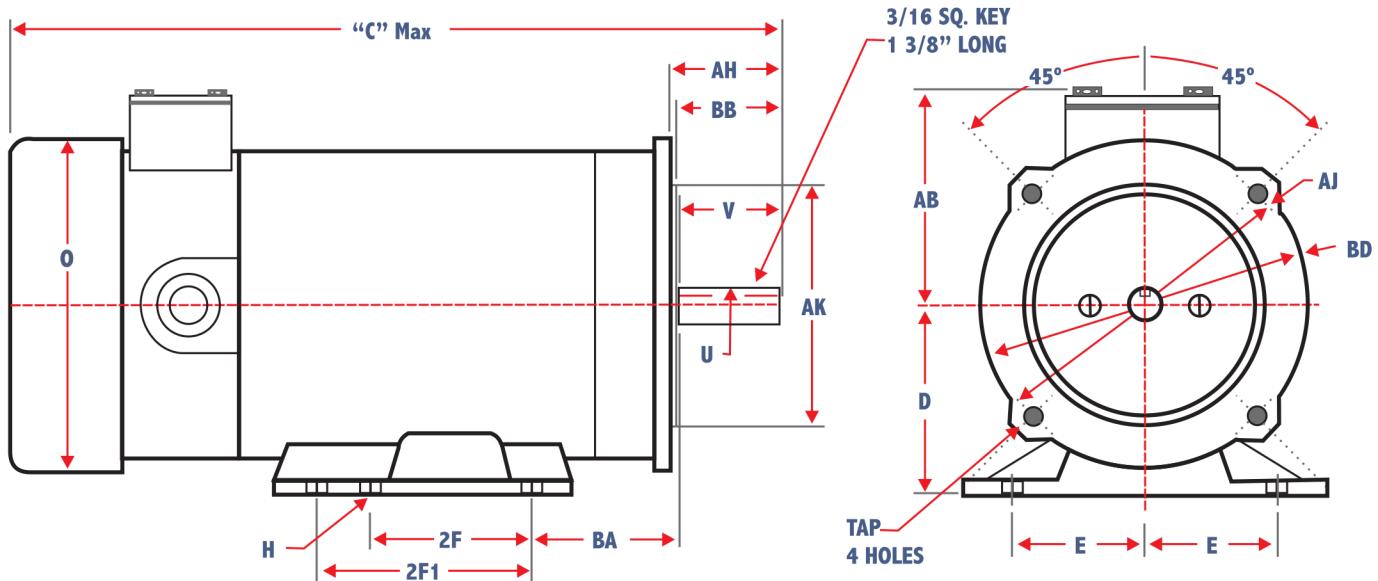
| HP  | CAT#     | RPM  | D.C.<br>VOLTS | F.L.<br>AMPS | FRAME | ENCL. | TORQUE<br>IN<br>LBS. | WT<br>LBS. |
|-----|----------|------|---------------|--------------|-------|-------|----------------------|------------|
| 1/4 | MM2512FC | 1750 | 12            | 21           | 56C   | TEFC  | 9                    | 21         |
|     | MM2512NV | 1750 | 12            | 21           | 56C   | TENV  | 9                    | 21         |
|     | MM2524FC | 1750 | 24            | 10.5         | 56C   | TEFC  | 9                    | 21         |
|     | MM2548FC | 1750 | 48            | 5.3          | 56C   | TEFC  | 9                    | 21         |
| 1/3 | MM3312FC | 1750 | 12            | 27           | 56C   | TEFC  | 12                   | 23         |
|     | MM3324FC | 1750 | 24            | 13.5         | 56C   | TEFC  | 12                   | 23         |
|     | MM3324NV | 1750 | 24            | 13.5         | 56C   | TENV  | 12                   | 23         |
| 1/2 | MM5012FC | 1750 | 12            | 39           | 56C   | TEFC  | 18                   | 25         |
|     | MM5024FC | 1750 | 24            | 20           | 56C   | TEFC  | 18                   | 25         |
| 3/4 | MM7512FC | 1750 | 12            | 63.6         | 56C   | TEFC  | 27                   | 30         |
|     | MM7524FC | 1750 | 24            | 31.8         | 56C   | TEFC  | 27                   | 30         |
| 1   | MM1012FC | 1750 | 12            | 80           | 56C   | TEFC  | 36                   | 32         |
|     | MM1024FC | 1750 | 24            | 40           | 56C   | TEFC  | 36                   | 32         |



# MaxMotion

## Low Voltage PMDC Motors 1/4HP to 1HP

### PMDC MOTOR DIMENSIONS



| HP         | 1/4-FC | 1/4-NV | 1/3-FC | 1/3-NV | 1/2-FC | 3/4    | 1      |
|------------|--------|--------|--------|--------|--------|--------|--------|
| <b>D</b>   | 3.5    | 3.5    | 3.5    | 3.5    | 3.5    | 3.5    | 3.5    |
| <b>E</b>   | 2.44   | 2.44   | 2.44   | 2.44   | 2.44   | 2.44   | 2.44   |
| <b>2F</b>  | 3      | 3      | 3      | 3      | 3      | 3      | 4      |
| <b>2F1</b> | -      | -      | -      | -      | -      | -      | 5      |
| <b>H</b>   | 11/32  | 11/32  | 11/32  | 11/32  | 11/32  | 11/32  | 11/32  |
| <b>O</b>   | 5.625  | -      | 5.625  | -      | -      | 5.625  | 5.625  |
| <b>U</b>   | 0.625  | 0.625  | 0.625  | 0.625  | 0.625  | 0.625  | 0.625  |
| <b>V</b>   | 1.875  | 1.875  | 1.875  | 1.875  | 1.875  | 1.875  | 1.875  |
| <b>AB</b>  | 4      | 4      | 4      | 4      | 4      | 4      | 4      |
| <b>AH</b>  | 2.063  | 2.063  | 2.063  | 2.063  | 2.063  | 2.063  | 2.063  |
| <b>AJ</b>  | 5.875  | 5.875  | 5.875  | 5.875  | 5.875  | 5.875  | 5.875  |
| <b>AK</b>  | 4.5    | 4.5    | 4.5    | 4.5    | 4.5    | 4.5    | 4.5    |
| <b>BA</b>  | 2.75   | 2.75   | 2.75   | 2.75   | 2.75   | 2.75   | 2.75   |
| <b>BB</b>  | 0.125  | 0.125  | 0.125  | 0.125  | 0.125  | 0.125  | 0.125  |
| <b>BD</b>  | 6.14   | 6.14   | 6.14   | 6.14   | 6.14   | 6.14   | 6.14   |
| <b>TAP</b> | 375-16 | 375-16 | 375-16 | 375-16 | 375-16 | 375-16 | 375-16 |
| <b>C</b>   | 11.625 | 11.181 | 11.625 | 11.181 | 12.01  | 13.938 | 14.75  |

The above dimensions are in inches

